

Auxiliary Propulsion Systems for Competition & Racing Sailboats, where minimum drag is the important factor. Also suitable for Cruising Sailboats, including Trimarans and Catamarans.

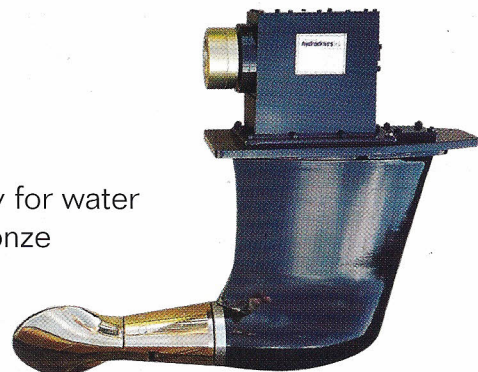
HYDRODRIVE MAXI II

Auxiliary propulsion for racing sailboats up to 27 mtrs/90 ft l.o.a.
For use with diesel engines up to 150HP/112kw.

Available in 2 different underwater lengths, the longest having facility for water intake if required. Choose between LM6 Aluminium or Gunmetal bronze underwater section.

This model has been fitted to the following Racing Sailboats:

FALCON **SAGAMORE** **BLUE YANKEE** **LA POSTE**
SAYONARA **BOOMERANG** **N.Z. ENDEAVOUR** **MERIT CUP**

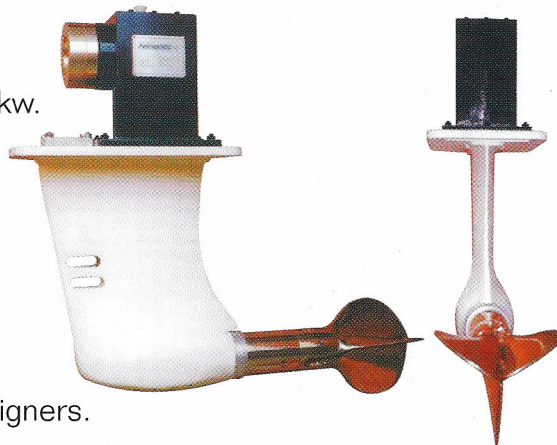


HYDRODRIVE 80

Auxiliary propulsion for Racing and Cruising Sailboats up to 18 mtrs/60 ft l.o.a. For use with diesel engines up to 90HP/67kw.

Available with High or Low upper Gearbox height.
LM6 Aluminium or Gunmetal Bronze underwater sections, which can be manufactured to include water intake facility, if required per the illustration

This model has been fitted to **CRACKLIN' ROSIE** and **PYEWACKET** and is specified by leading Racing Sailboat Designers.



HYDRODRIVE 3/4/1 TON

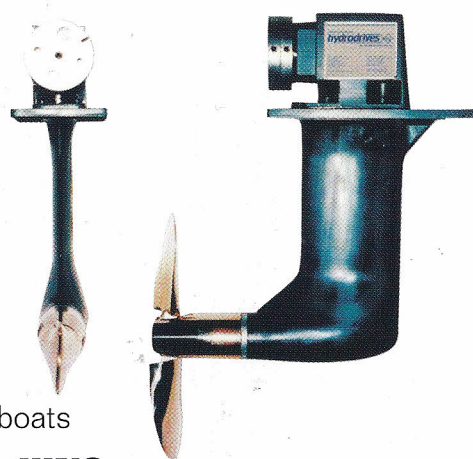
Auxiliary propulsion for Racing and Cruising Sailboats up to 18 mtrs/60 ft l.o.a. including Trimarans & Catamarans.
For use with diesel engines up to 40HP/30kw.

Available with 3 different upper Gearbox heights and 2 different underwater lengths. Choose between LM6 Aluminium or Gunmetal Bronze underwater section.

The illustration shows the shortest unit available.

This model first introduced in 1990 has been fitted to the following sailboats

TEAM GROUP FOUR **REGION HAUTE NORMANDIE** **JUNO**
RUBIN **KINGFISHER** **SPIRIT OF CANADA** **CORUM**

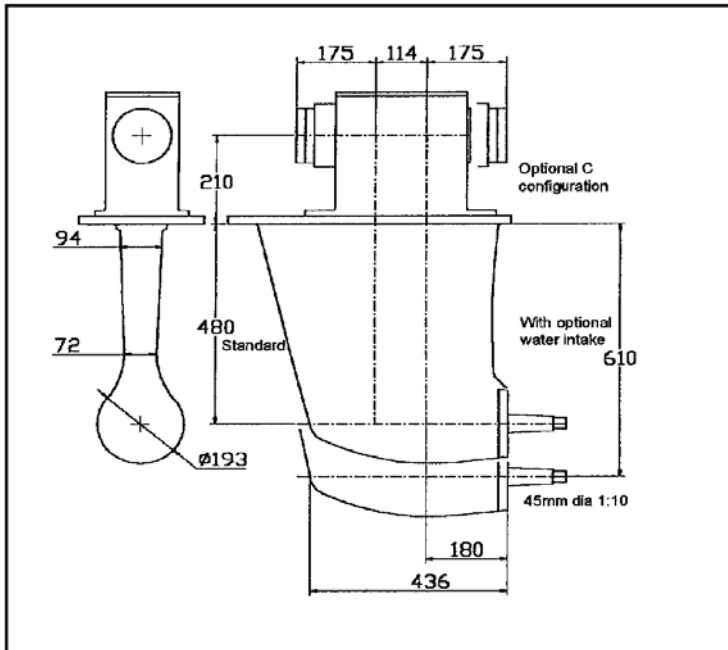


STRUT DRIVES

Sillette-Sonic Ltd

Sales & Correspondence
Unit 2 Beverley Trading Estate
190/192 Garth Road, Morden
Surrey SM4 4LU - UK

tel: +44 (0)20 8337 7543
fax: +44 (0)20 8330 9014
e-mail: sales@sillette.co.uk
website: http://www.sillette.co.uk



HYDRODRIVE MAXI II

For IMS, 70 ft Whitbread Maxi etc.

Max input torque 85kg/mtr

Designed for use with GORI
2 blade race type folding propeller
680 Dia. or (750 Dia Special)
GORI, 3 blade folding 24" dia.

Can accept, Aquadrive, R & D,
Vetus and Layrub couplings

Typical engines used VOLVO TAMD31A, TAMD41H
YANMAR 4LH-HTE, 130/140 HP.4JH3-DTE. 125HP
YANMAR 4J 4HTE. 4BY150
VOLVO D3-110, D3-110, D3-160
LOMBARDINI LDW 194JMT
with 2, 2.5 or 3:1 Gearbox fitted

Price basic unit, all aluminium

Plus 2 Blade Gori

£22,700

or Plus 3 Blade Gori

£21,700

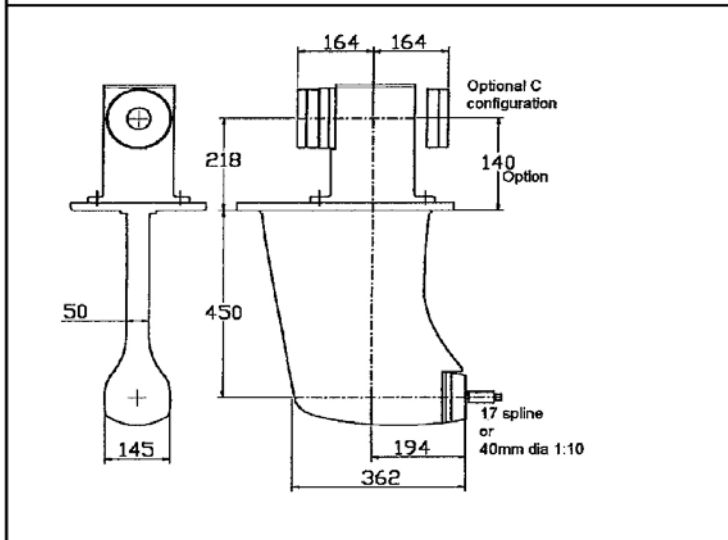
Extra for 610mm lower unit

£2,000

Extra for Bronze lower unit

£3,300

Option for 490 mm slimline & 180mm topbox



HYDRODRIVE 80

For 2 ton, 50 foot, 60 foot etc.

Max input torque 45 kg/mtr.

Designed for use with GORI folding
race propeller 475 or 530 diameter
or GORI 3 blade folding propeller
20" or 18" diameter.

Can accept, Aquadrive, R & D,
Vetus or Layrub couplings.

Typical engines used, YANMAR
4JH3-E, 4JH3-TE, 4JH4E
VOLVO D2-75 & D2-55
LOMBARDINI LDW 2204M
4JH4-TE Reduction
box 3:1, 2.6:1 and 2:1, to maximise
torque utilisation.

Price basic unit all aluminium

without propeller

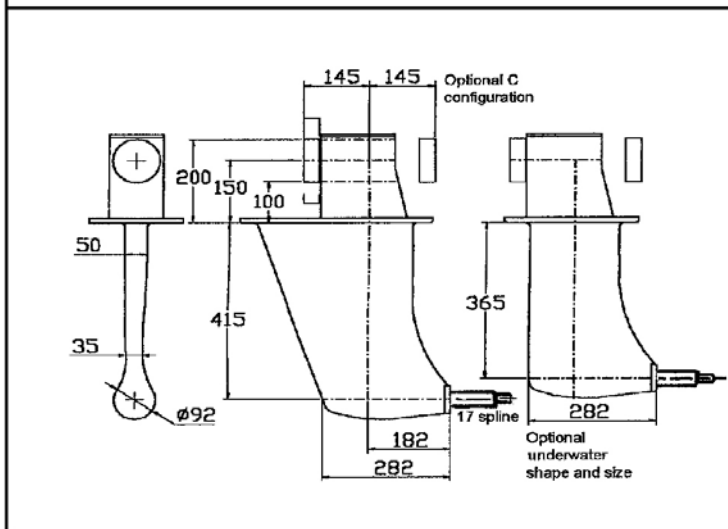
£7,500

extra for bronze lower

£1,500

with hydraulic motor mounting

£5,900



HYDRODRIVE 3/4 / 1 TON

Fitted to many Admirals cup winners.

Max input torque 22 kg/mtr

Designed for use with GORI,
2 blade folding race propeller
380 & 425 mm diameter.

Can accept Aquadrive or
Metalastic couplings.

Typical engines used YANMAR 3GM30, 3YM30
VOLVO 2030, YANMAR 3JH3, BUKH DV36, VOLVO D1-30
LOMBARDINI LDW 1404M
ie 25 - 40HP with 2.6:1 or 2:1 ratio

Price basic unit all aluminium

without propeller

£3,500

with bronze lower

£4,050

for use with electric motor

£2,600

reversed rotation extra

£220