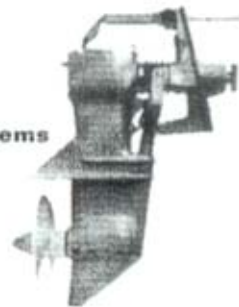


Sillette-Sonic Ltd

Manufacturers of SONIC marine transmissions & HYDRODRIVE propulsion systems



Sales & Correspondence:

Unit 2 Beverley Trading Estate
190/192 Garth Road
Morden, Surrey
SM4 4LU - UK

tel: +44 (0)20 8337 7543

fax: +44 (0)20 8330 9014

e-mail: sales@sillette.co.uk

website: www.sillette.co.uk

ANNOUNCEMENT

NEW – SAILDRIVE FOR HIGHER KW ELECTRIC MOTORS

Please find herewith detail of our latest **Sonic Elect** saildrive unit, to meet the increased demand for 10 to 30 KW electric motors. The unit is based on our MK1 saildrive lower unit, but with spiral bevel gears for quiet running.

Transmission can be by toothed belt, or chain & sprocket, with ratios to suit propeller efficiency, limited by a maximum torque input of 22 Kg/Mtr and a pulley diameter as illustrated.

Maximum propeller size is 17" (432 mm) in two blade or three blade fixed propeller and 16 1/2" (419mm) Gori two or three blade folding propeller, although in certain circumstances it may be possible to fit 18" (457mm) two blade fixed or folding propeller.

For the aluminium unit, you must use a 17 spline aluminium fixed blade propeller, or Gori 17 spline folding propeller, whereas for the bronze unit, use taper fitting bronze fixed blade propeller, or Gori 17 spline folding propeller.

Your electric motor can be mounted remotely, or via a bracket attachment to the cross hatched area shown on the plan view of the drawing and held by stud and nut fixing onto the 13 mm saildrive mounting plate.

Importers of:-

"ELICHE RADICE"

Sterndrive Propellers

for ENFIELD

SONIC & VOLVO

2 & 3 blade

bronze propellers

"GORI" folding propellers

"SAVORETTI" Italian

steering wheels

Suppliers of:

"LAKE" sterngear

"JABSCO" impellers

Main agents for:

"TELEFLEX MORSE"

engine & steering controls

"VETUS" equipment

"YANMAR" marine &

"LOMBARDINI" marine

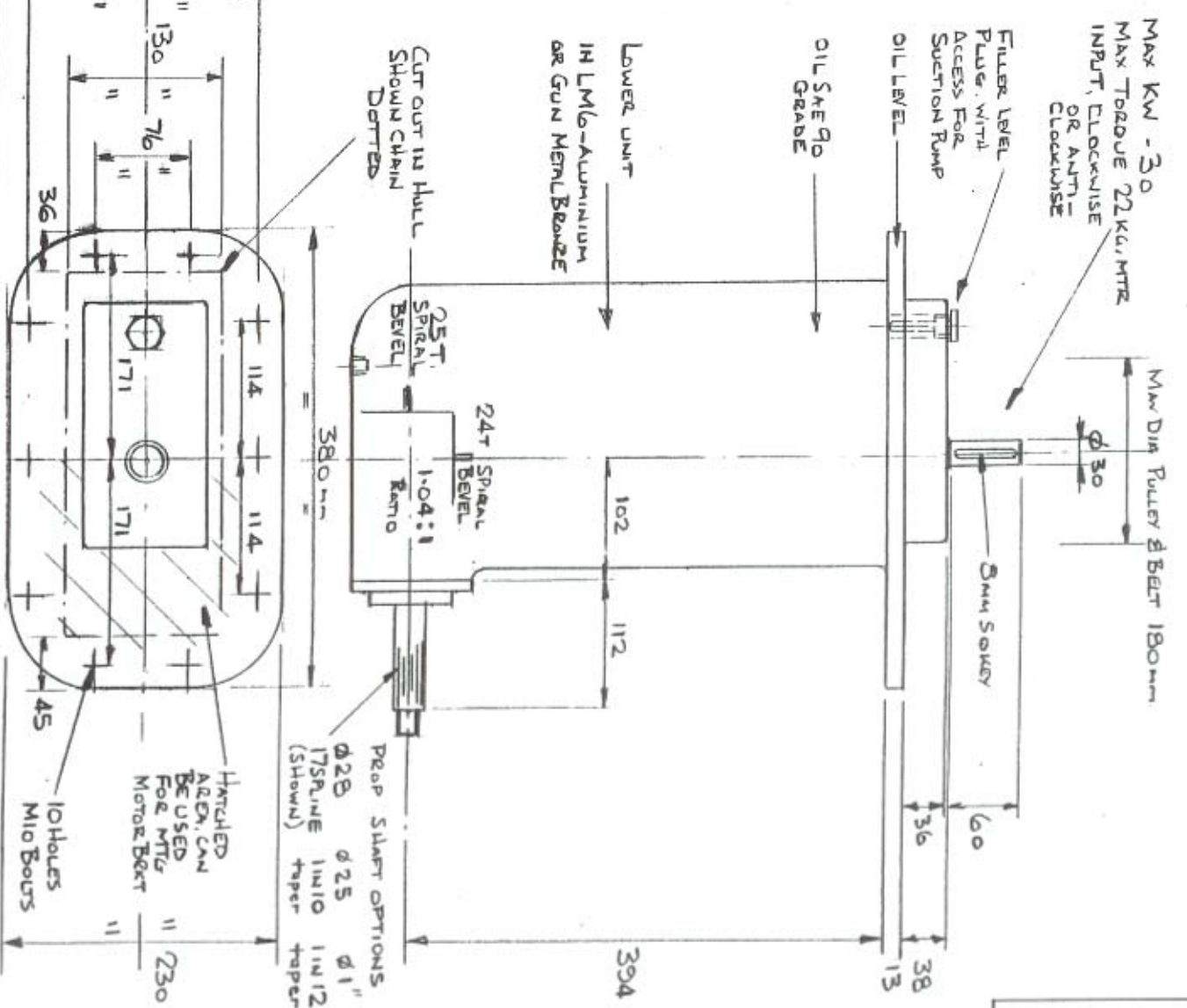
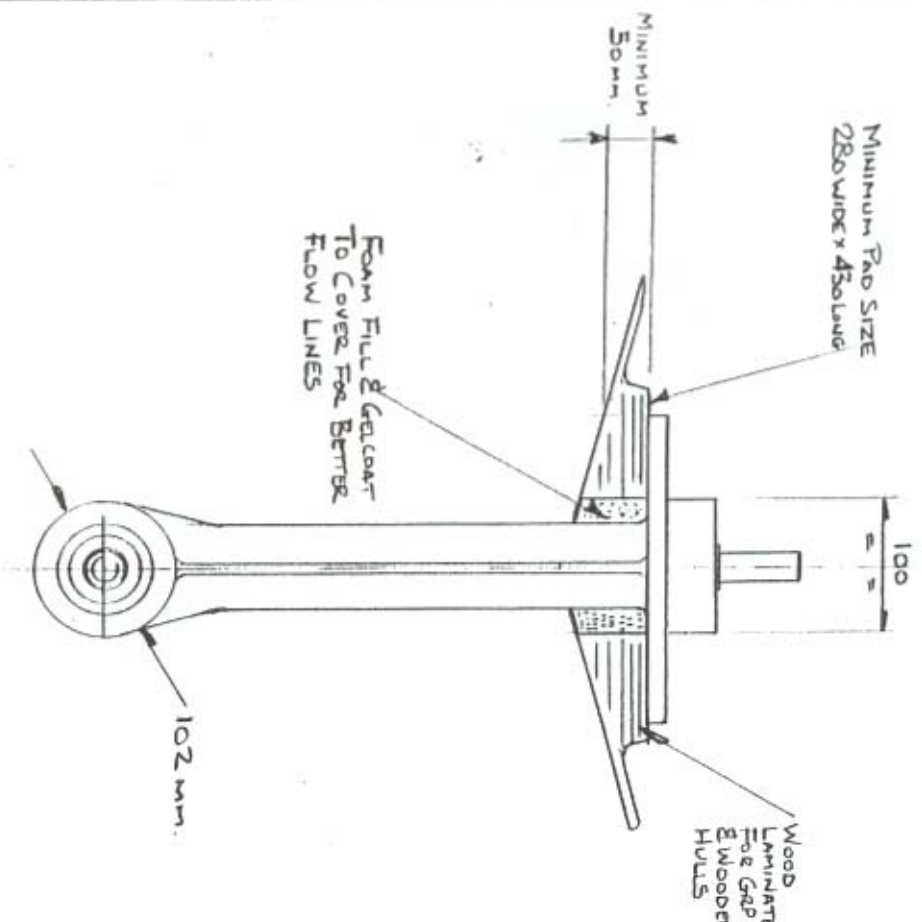
diesel engines

Outdrive service

Overhauls & spares for

ENFIELD, SONIC

& TRANSADRIE



No.	DESCRIPTION	CHK'D	APP'D	DATE

SONIC ELEC SAILED DRIVE FOR UP TO 30KW
22KV/MTR MAX TORQUE AT INPUT.

DRAWN	TRACED	CHECKED	APPROVED	DATE	SCALE
APD				MAR 06	1/4 SIZE

DRG No.