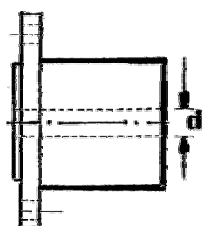


## R and D Flexible Shaft Couplings

Flexible Coupling	For Gearbox	Diameter	No. Bolts	Coupling Capacity HP/100rpm	Price £
910-001	Borg Warner, PRM, Hurth, Technodrive	4"	4	5	£60.00
910-002	Yanmar	4"	4	3	£60.00
910-003	Borg Warner, PRM, MPM, Twin Disc	5 3/4"	6	20	£160.00
910-004	Borg Warner, PRM, Hurth	4"	4	8	£73.00
910-005	Paragon	4"	4	7	£73.00
910-006	Twin Disc, MPM	5 3/4"	6	20	£194.00
910-007	Volvo	4"	4	3	£60.00
910-009PR	Borg Warner, PRM, Hurth, Volvo	5"	4	13	£110.00
910-012	Yanmar	5"	4	10	£110.00
910-013	Bukh	90mm	4	3	£60.00
910-014	Borg Warner, PRM, Hurth, Technodrive	4"	4	3	£60.00
910-015	Self change 350HD	8 3/4"	6	43	£382.00
910-016	Self change 700HD	10 1/4"	6	65	£575.00
910-017	Twin Disc	7 1/4"	6	40	£372.00
910-018	PRM	7 1/4"	6	40	£372.00
910-019	Volvo	4"	4	3	£60.00
910-020	Volvo	4"	4	5	£60.00
910-021	Enfield, Sonic	4"	2	2.5	£67.00
910-022	Twin Disc	9"	8	65	£575.00
910-024	Twin Disc	10 1/2"	8	85	£699.00
910-025	Borg Warner, PRM, MPM, Twin Disc	5 3/4"	6	28	£212.00
910-026	Twin Disc, MPM	5 3/4"	6	28	£240.00
910-029	Borg Warner, Hurth, Volvo	5"	4	20	£190.00
910-030	120 hp	11 1/2"	8	120	£1,100.00
910-052	Lister	4 3/4"	3	10	£135.00
910-057	ZF Hurth/BW	5"	4	25	£244.00



### Shaft Half Coupling

**SOLID TYPE** - Specify 'd' diameter

4" for B.W. Hurth, PRM Bored & Keyed £105.00

5" for B.W. Hurth, PRM (Taper) Bored & Keyed £159.00

6" for PRM (Taper) Bored & Keyed £226.00

**CLAMP ON**

**SPLIT TYPE** - Specify 'd' diameter

4" for B.W. Hurth, PRM, Yanmar Bored, 25mm, 3/4" or 1" £73.00

5" for B.W. Hurth, PRM, Yanmar Bored, 1 1/4" £103.00

4" for B.W. Hurth, PRM, Yanmar Bored other than above £90.00

5" for B.W. Hurth, PRM, Yanmar Bored other than above £125.00

6" for P.R.M. Bored £166.00

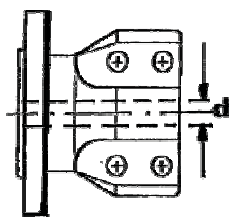
4" Volvo type Bored £89.00

4" Yanmar type Bored £89.00

4" Bukh type Bored £89.00

Keyslot above split type extra £25.00 nett

Non standard bores extra £29.00 nett



**Earthing Connections**, consist of a

silver impregnated rubber strip, which when fitted through the axis of the coupling between the two failsafe straps gives electrical continuity.



Part No	Size (mm)	to suit coupling	
103-037	11 x 57	910-001, 002, 007	
		013, 014, 019 & 020	£13.00
103-039	17 x 57	910-003, 006, 009, 012	£15.00
103-041	23 x 57	910-029, 057	£20.00

**Engine Mountings**, medium, 800-036

300 lbs/140 kg capacity .04"/1mm deflection £26.00

small 800-040

90 lbs/41 kg capacity .14"/3.5mm deflection £29.00

small 800-041

200 lbs/91 kg capacity .14"/3.5mm deflection £29.00

(All 5/8" stud and 4" bolt down ctrs, 2" to 4" height adjustment)